

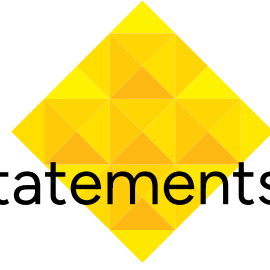


**RACKLA
METALS INC**

Expanding The Boundaries of the Tombstone Gold Belt

Eastern Yukon and Western NWT

BOOTS ON THE GROUND - MAKING DISCOVERIES



Forward Looking Statements & Qualified Person

Certain statements contained in this presentation constitute forward-looking statements within the meaning of Canadian securities legislation. All statements included herein, other than statements of historical fact, are forward-looking statements which may include, without limitation, statements about Rackla Metals Inc. (TSX-V: RAK) (the "Company") plans for its investments and properties; the Company's business strategy, plans and outlook; the merit of the Company's investments and properties; timelines; the future financial performance of the Company; expenditures; approvals and other matters. Often, but not always, these forward-looking statements can be identified by the use of words such as "estimate", "estimates", "estimated", "potential", "open", "future", "assumed", "projected", "used", "detailed", "has been", "gain", "upgraded", "offset", "limited", "contained", "reflecting", "containing", "remaining", "to be", "periodically", or statements that events, "could" or "should" occur or be achieved and similar expressions, including negative variations.

Forward-looking statements involve known and unknown risks, uncertainties and other factors which may cause the actual results, performance or achievements of the Company to be materially different from any results, performance or achievements expressed or implied by forward looking statements. Such uncertainties and factors include,

among others, changes in general economic conditions and financial markets; the Company or any joint venture partner not having the financial ability to meet its exploration and development goals; risks associated with the results of exploration and development activities, estimation of mineral resources and the geology, grade and continuity of mineral deposits; unanticipated costs and expenses; and such other risks detailed from time to time in the Company's quarterly and annual filings with securities regulators and available under the Company's profile on SEDAR+ at www.sedarplus.ca. Although the Company has attempted to identify important factors that could cause actual actions, events or results to differ materially from those described in forward-looking statements, there may be other factors that cause actions, events or results to differ from those anticipated, estimated or intended.

Forward-looking statements contained herein are based on the assumptions, beliefs, expectations and opinions of management, including but not limited to expectations that the Company's activities will be in accordance with its public statements and stated goals; that all required approvals will be obtained; that there will be no material adverse change affecting the Company, its investments or properties; and such other assumptions as set out herein. Forward-looking statements are made as of the date hereof and the

Company disclaims any obligation to update any forward- looking statements, whether as a result of new information, future events or results or otherwise, except as required by law. There can be no assurance that forward-looking statements will prove to be accurate, as actual results and future events could differ materially from those anticipated in such statements. Accordingly, investors should not place undue reliance on forward-looking statements.

Under the terms of NI43-101, Scott Casselman, B.Sc, P. Geo. is Rackla's Qualified Person. Mr Casselman holds a B.Sc. degree from Carleton University, Ottawa, Canada. He has been involved in mineral exploration since 1985, working mostly in the exploration and development of precious metals and porphyry-style deposits, but also in magmatic nickel, uranium, diamond and industrial limestone exploration. Mr. Casselman has worked throughout the world including Indonesia, Turkey, Argentina, Alaska, and across Canada, including the three northern territories, Yukon, Northwest Territories and Nunavut. Mr. Casselman is a member of the Engineers and Geoscientists of BC (No 109803) and a "Qualified Person" in accordance with National Instrument 43-101 and has reviewed and takes responsibility for the technical information contained in this presentation.

A PREMIER LOCATION

The Tombstone Gold Belt



The Tombstone Gold Belt extends across the Yukon and is host to numerous multi-million-ounce gold deposits.



Gold deposits within the belt are known as “Reduced Intrusion-related Gold System” (RIRGS).



The recent discoveries by Banyan Gold & Snowline Gold Corp are indicative of the potential of RIRGS deposits in this Belt.



In 2023, Rackla discovered two new RIRGS occurrences at the Astro Plutonic Complex, extending the gold belt into the NWT.



These Reduced Intrusion-Related Gold deposits are bulk mineable with simple metallurgy.





A PREMIER LOCATION

The Tombstone Gold Belt

Eastern Cluster

Snowline Gold Corp.
Rogue Plutonic Complex: 318.8 m @ **2.55 g/t Au**

Astro Plutonic Complex

Rak Main

Jos

Black

Flat

- Western Cluster**
- Victoria Gold Corp.**
Eagle: **8.8 Moz Au**
 - Victoria Gold Corp.**
Brewery Creek: **2.16 Moz Au**
 - Sitka Gold Corp.**
RC Gold: **1.34 Moz Au**
 - Florin Resources Inc.**
Florin: **2.47 Moz Au**
 - Banyan Gold Corp.**
AurMac: **7.0 Moz Au**
 - Victoria Gold Corp.**
Raven: **1.1 Moz Au**

Ownership	Geology
Rackla Metals	Plutonic Rocks
Fireweed Metals	Selwyn Basin
Snowline Gold	Tombstone Gold Belt
Staked	

AK YK

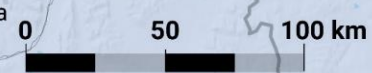
NWT

North Canal Road

SELWYN BASIN

Cantung

TINTINA FAULT



Dawson City

Mayo

Carmacks

Ross River

Haines Junction

Whitehorse

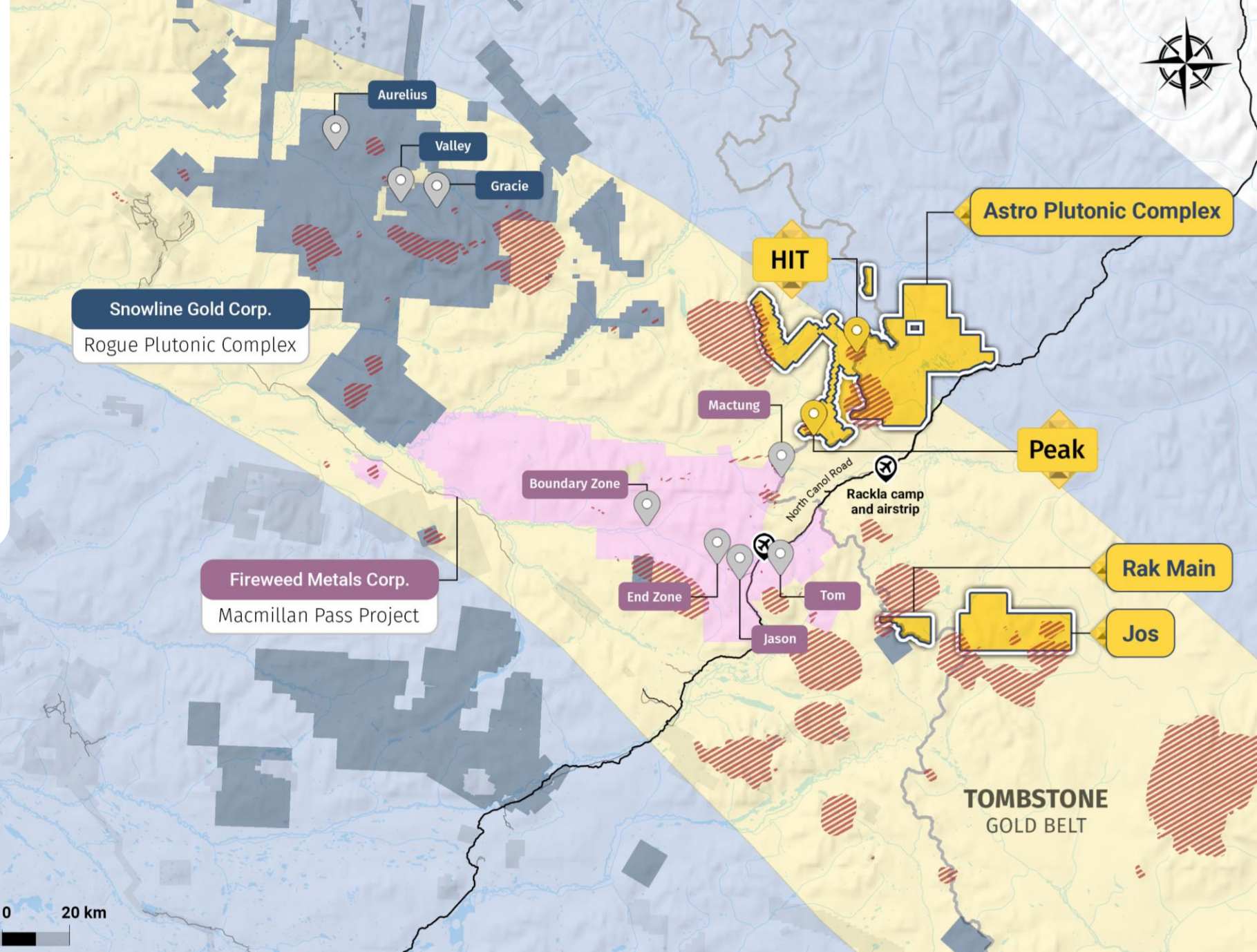
Tuchitua

RACKLA METALS INC

EASTERN TOMBSTONE GOLD BELT

The Eastern Cluster presents an exciting opportunity

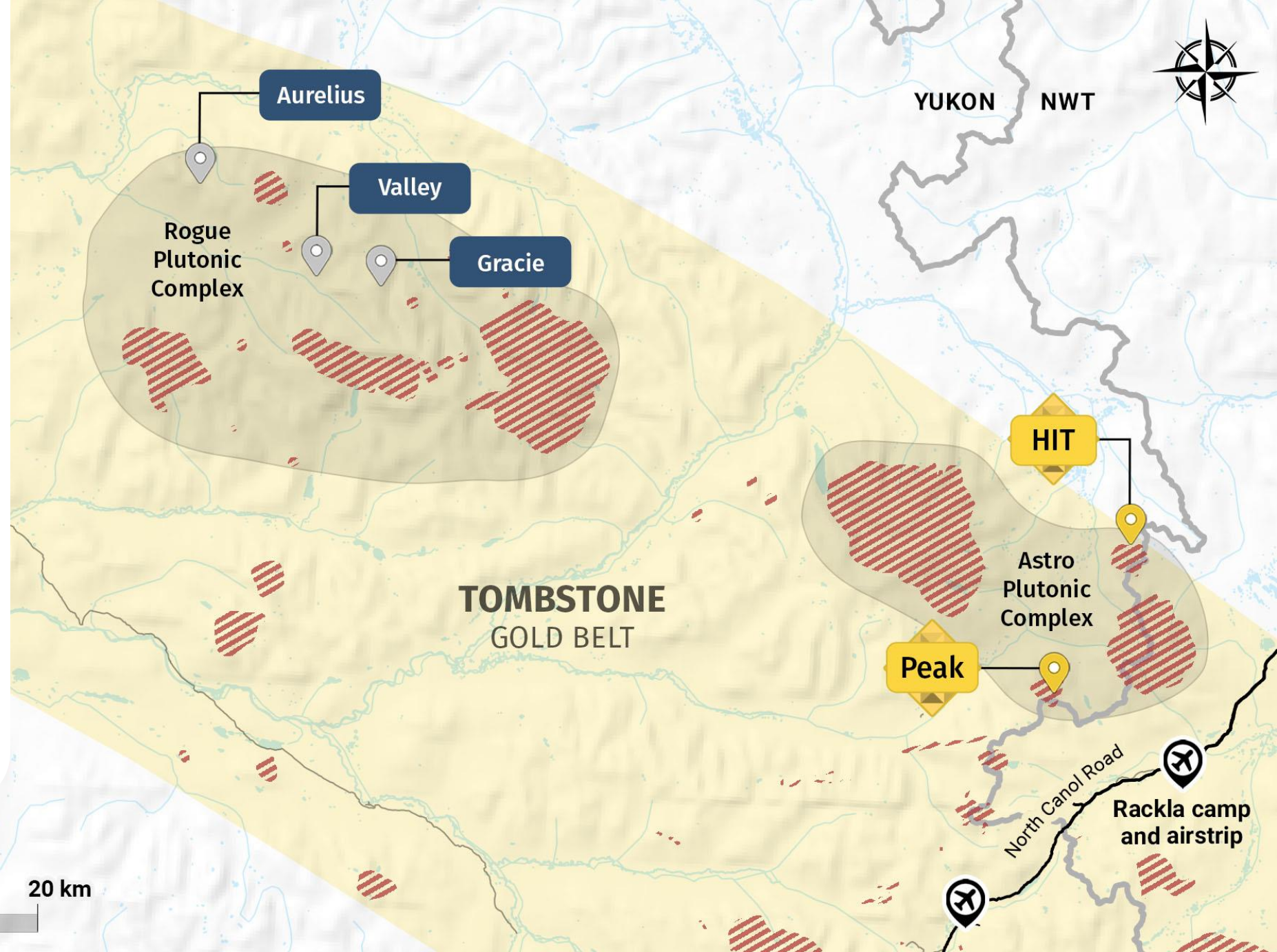
- Previously known for its World Class Base Metals Deposits:
 - Mactung W Skarn
 - Tom, Jason, & Boundary Zn-Pb-Ag Sedex
- The Eastern Yukon is also proving to be extremely prospective for Reduced Intrusion-Related Gold Systems.
- This style of gold deposit tends to occur in clusters.



Eastern Cluster

Astro Plutonic Complex

- ✓ The Astro Plutonic Complex (APC) is located 20 Km east of Snowlines' Rogue Plutonic Complex & Valley Discovery.
- ✓ Rackla acquired mineral rights in the APC in the fall of 2022.
- ✓ The Astro Plutonic Complex has seen limited exploration for gold and no exploration for the style of RIRGS deposits prior to 2023.
- ✓ Road-accessible camp.
- ✓ Two new RIRGS prospects discovered in 2023.

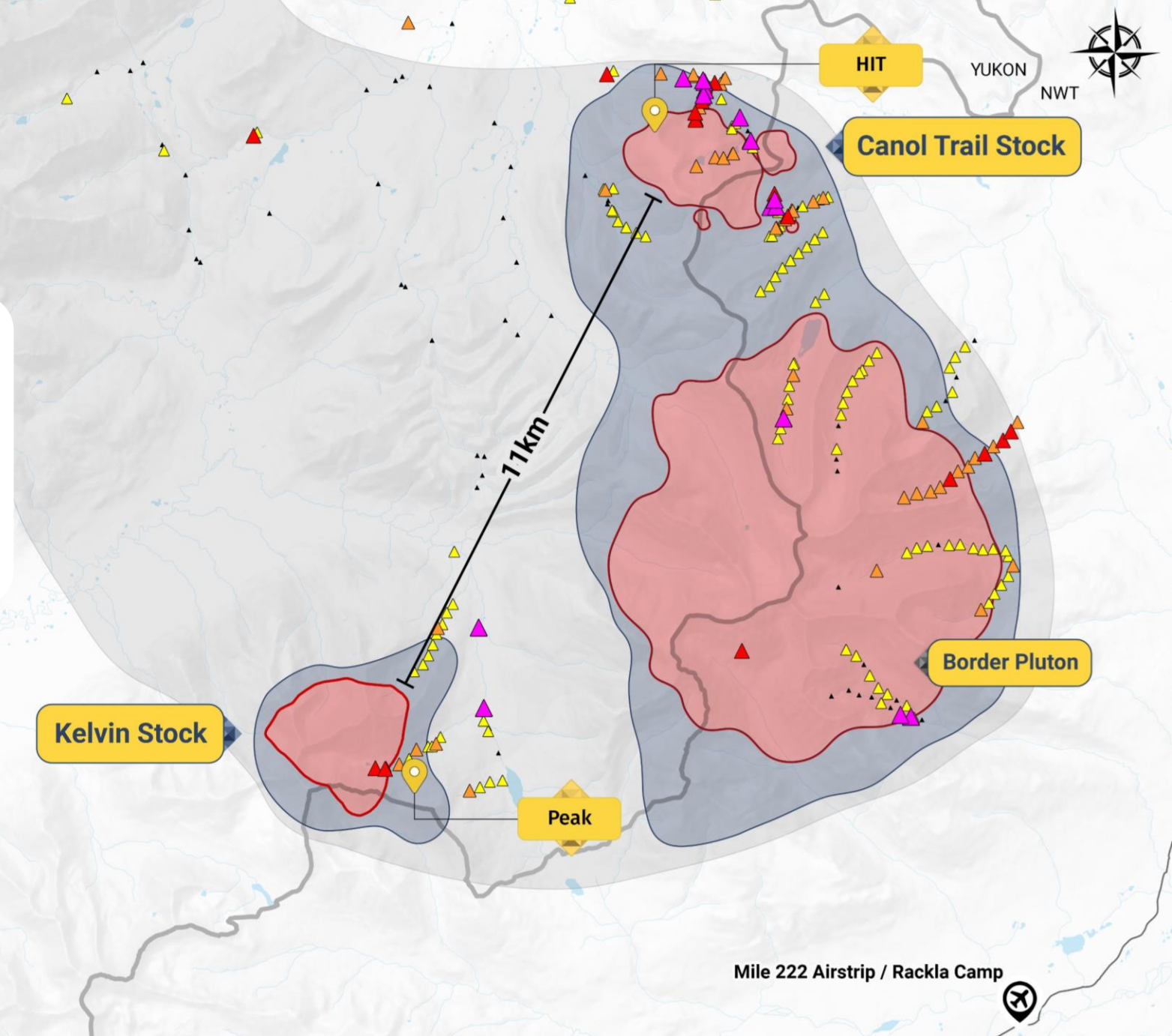
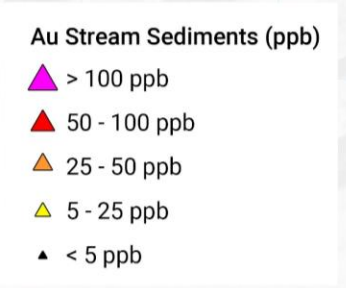


Geology
Plutonic Rocks



Regional Geochemical Signature

- Geological Survey of Canada Regional Geochemical Sampling (RGS) data highlighted high gold values proximal to Cretaceous intrusions and associated with the alteration halos in the APC.
- Detailed stream sediment sampling by Rackla around the three main intrusive bodies identified strong gold anomalies draining from the intrusive bodies.
- The stream sediment anomalies are associated with bismuth, arsenic and tellurium, a characteristic of RIRGS deposits.



CANOL TRAIL STOCK

HIT Discovery

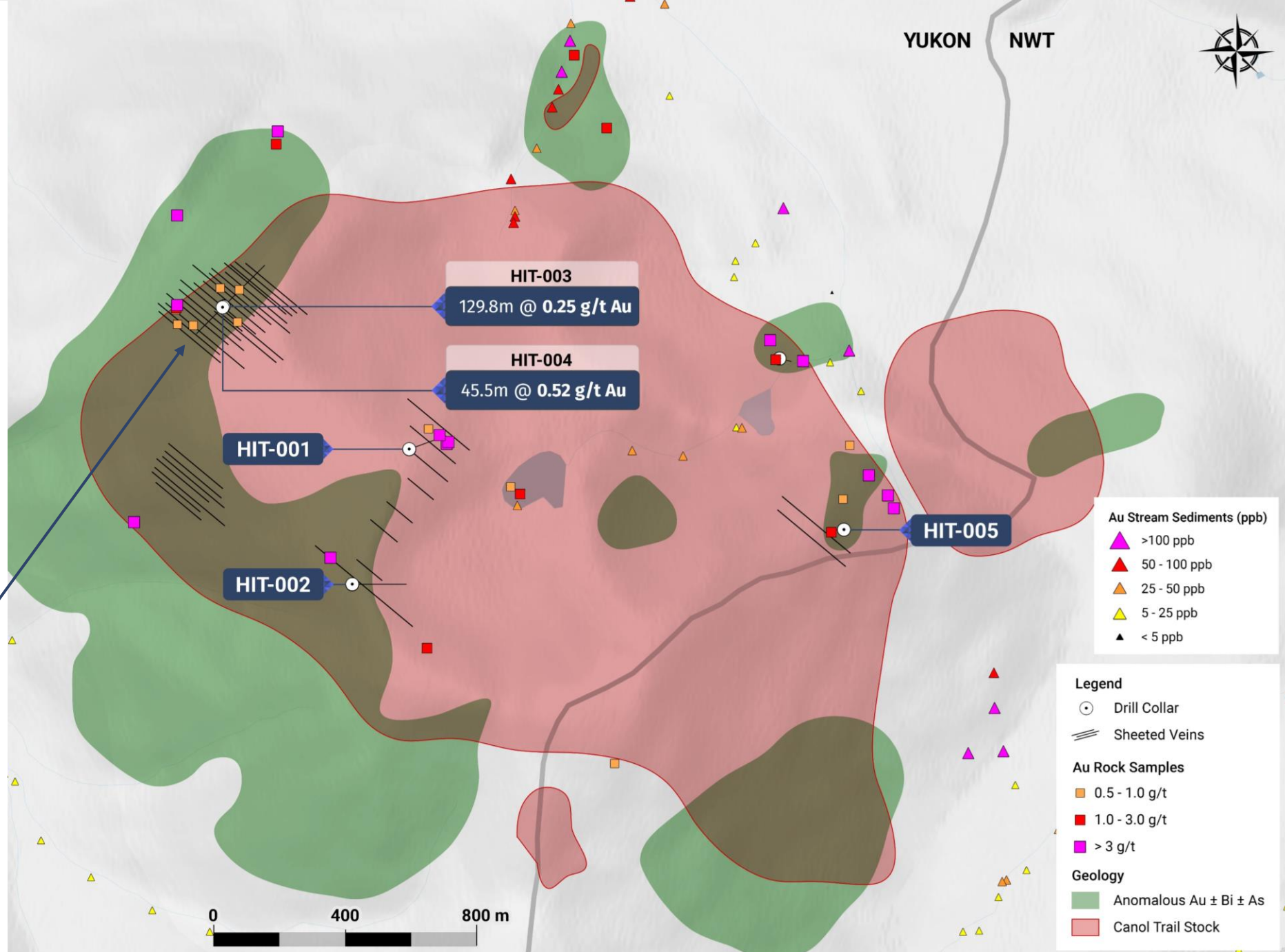
- Canol Trail Stock measures 2.5 sq km.
- Prominent corridor of intense sheeted quartz-sulphide veins within the intrusion.
- Coincident Au/Bi/As soil anomaly.
- Rackla drilled 5 holes testing 4 target areas in 2023.

RIRGS Target Discovered!

- Holes HIT-003 and HIT-004 intersected RIRGS-style gold mineralization over significant widths.

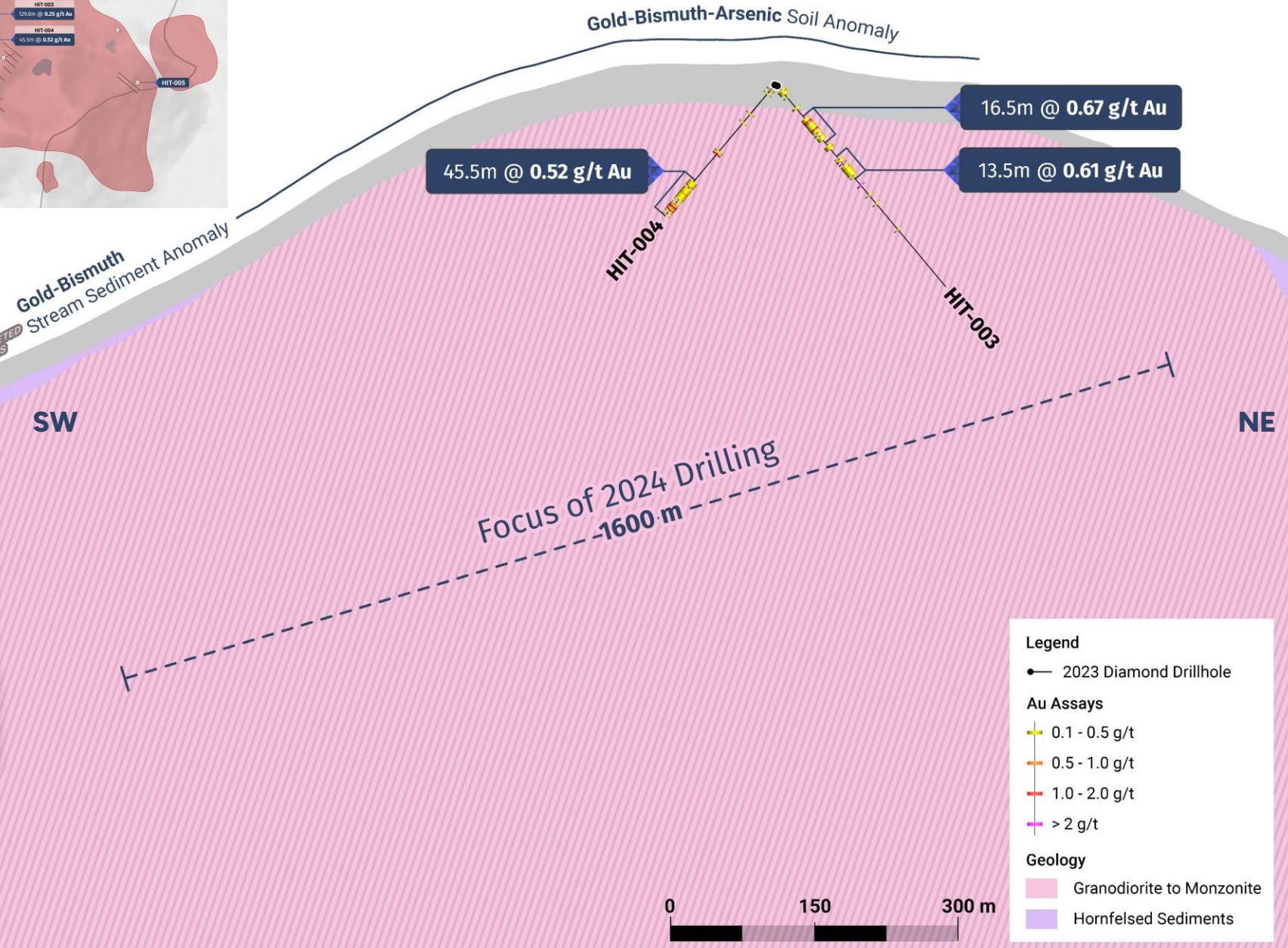
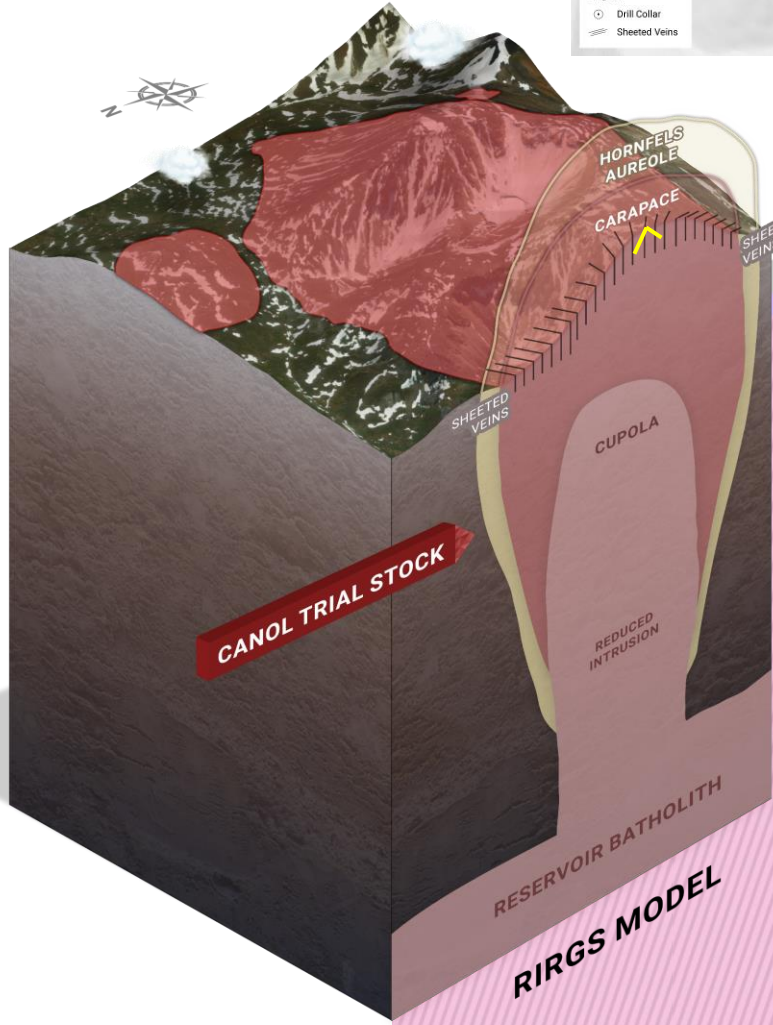
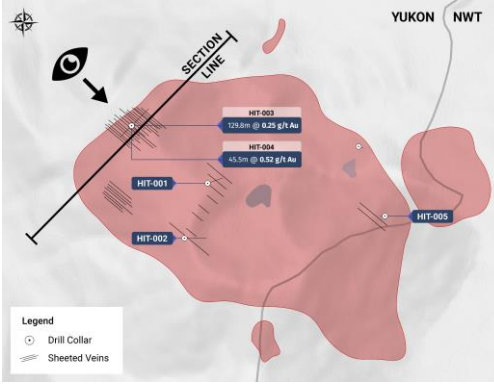


HIT sheeted quartz-sulphide veins on surface, 0.4 g/t Au over 1m



PRIORITY TARGET FOR 2024

HIT Discovery



Legend

- 2023 Diamond Drillhole

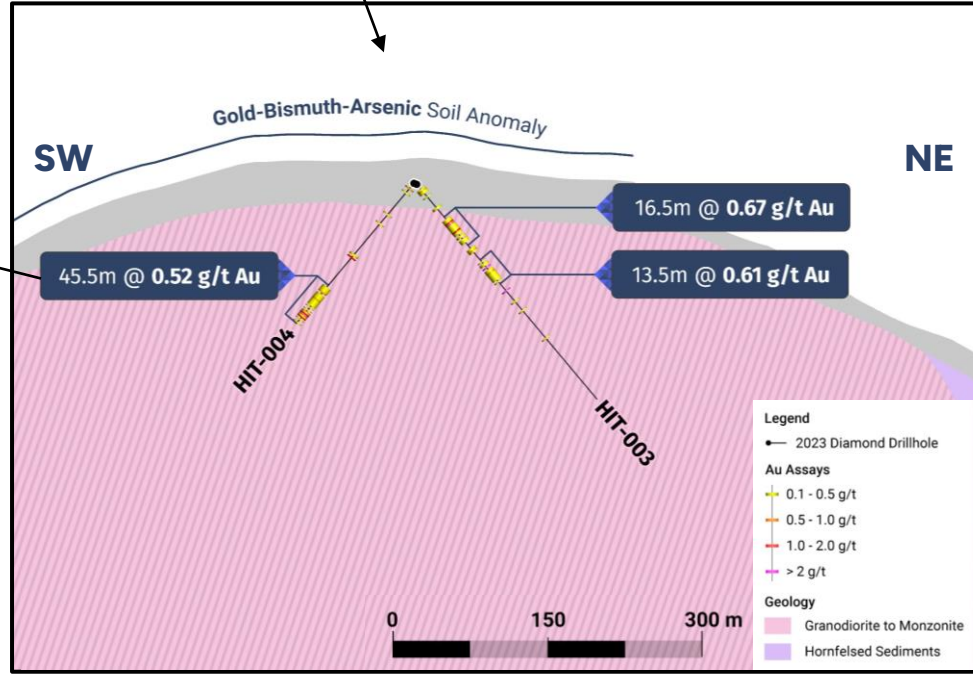
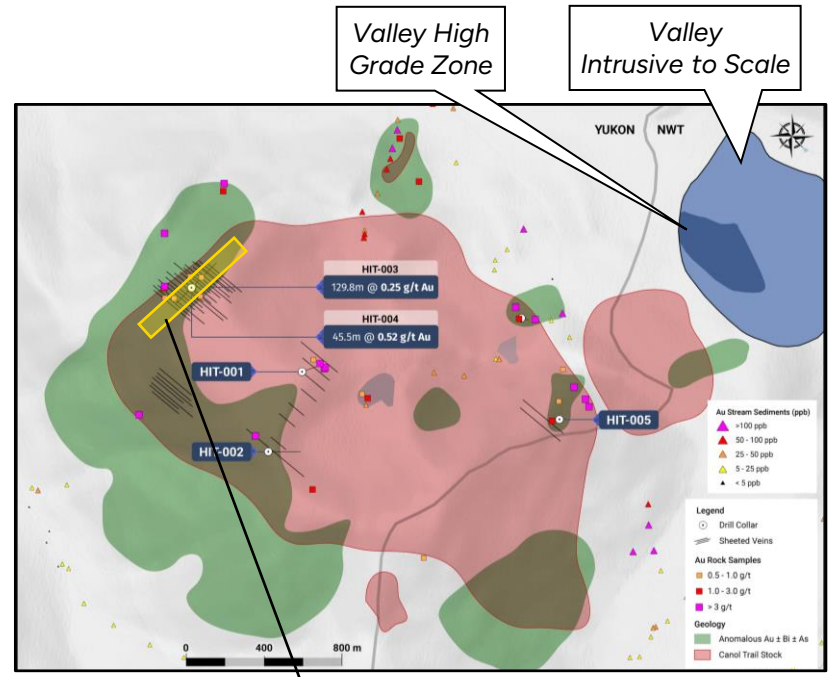
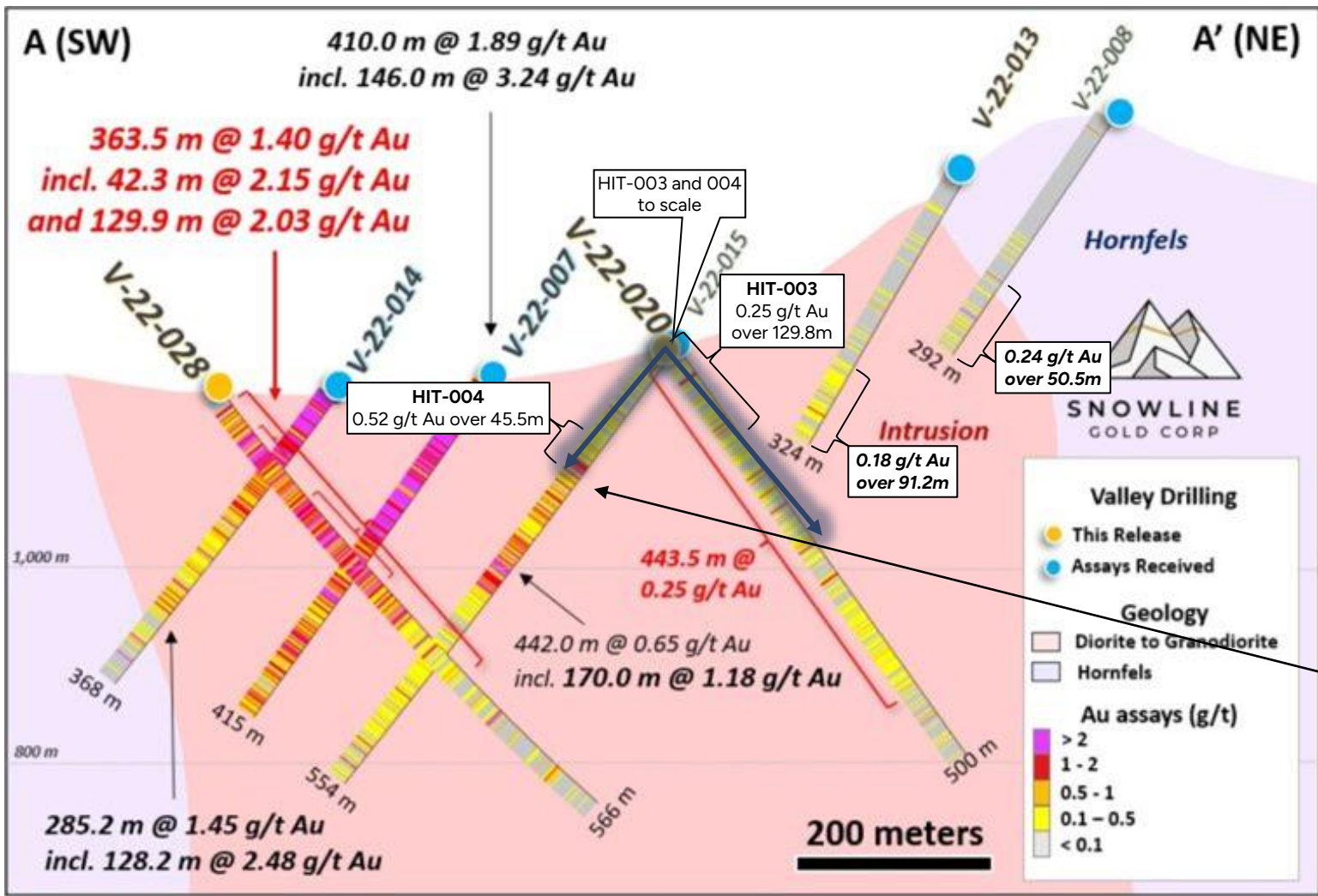
Au Assays

- 0.1 - 0.5 g/t
- 0.5 - 1.0 g/t
- 1.0 - 2.0 g/t
- > 2 g/t

Geology

- Granodiorite to Monzonite
- Hornfelsed Sediments

COMPARISON of HIT to VALLEY (compiled by 3L Capital)




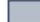
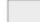
From 3L Capital "Comparison of Rackla's HIT target results to Snowline's Valley deposit and results in plan and cross section view. Rackla's two holes have been superimposed over the Valley discovery on the left for scale, highlighting that Rackla could be just on the edge of a higher-grade zone at HIT. Also, notice that the grades Rackla encountered are similar to those in the periphery of the higher grading zone at Snowline's Valley Discovery. The host intrusion and higher-grade zone at Snowline are shown in the plan view in the top right for scale purposes."

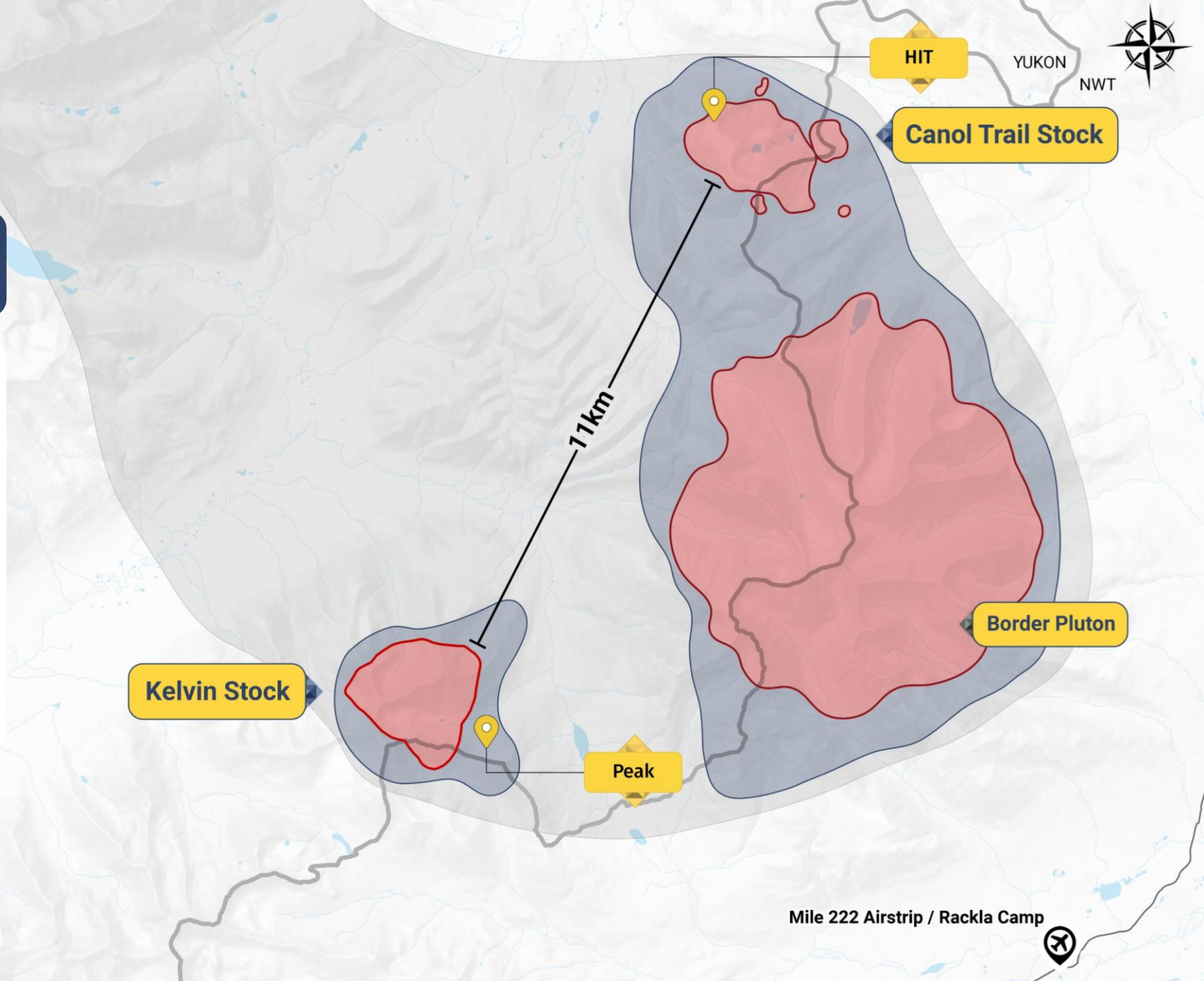
Peak Discovery

The Size, Scale and Chemical Association of the Kelvin Stock is Significant

- ✓ The Kelvin Stock is a Tombstone Suite granite that measures 2.2 sq km at surface.
- ✓ Stream sediment samples from streams draining the Kelvin Stock and the adjacent sediments returned strong gold-bismuth-arsenic correlation typical of a RIRGS.
- ✓ Sheeted quartz veins have been mapped throughout the intrusion, a productive environment for the discovery of a RIRGS deposit.
- ✓ Detailed sampling of north trending sheeted veins at Peak defined a robust gold-bearing system.

Geology

-  Cretaceous Intrusions
-  Alteration Aureole
-  Astro Plutonic Complex



KELVIN STOCK

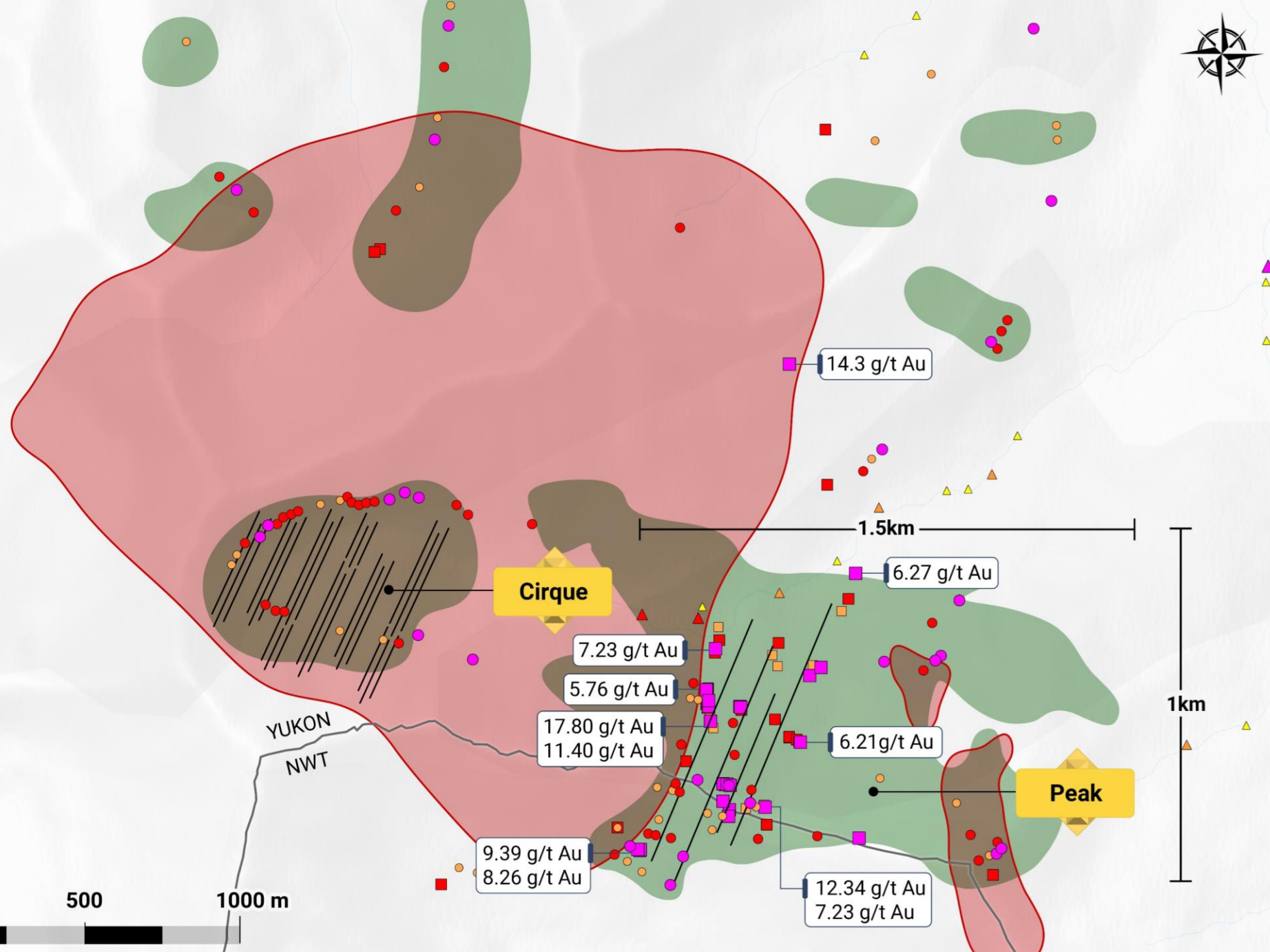
Peak Discovery

✓ 20% of rock samples have returned **>1 g/t gold values.**

Geology

- Anomalous Au ± Bi ± As
- Kelvin Stock

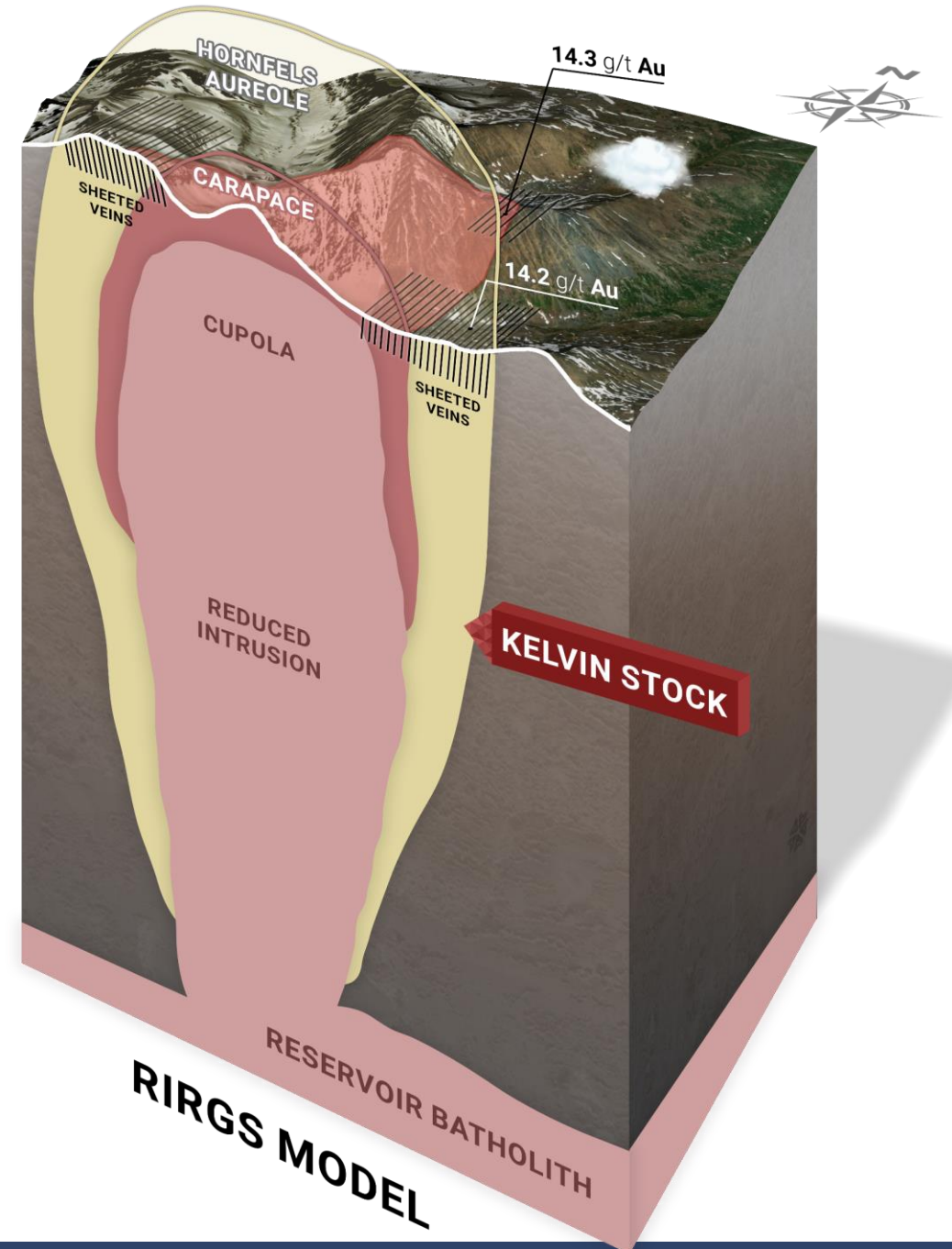
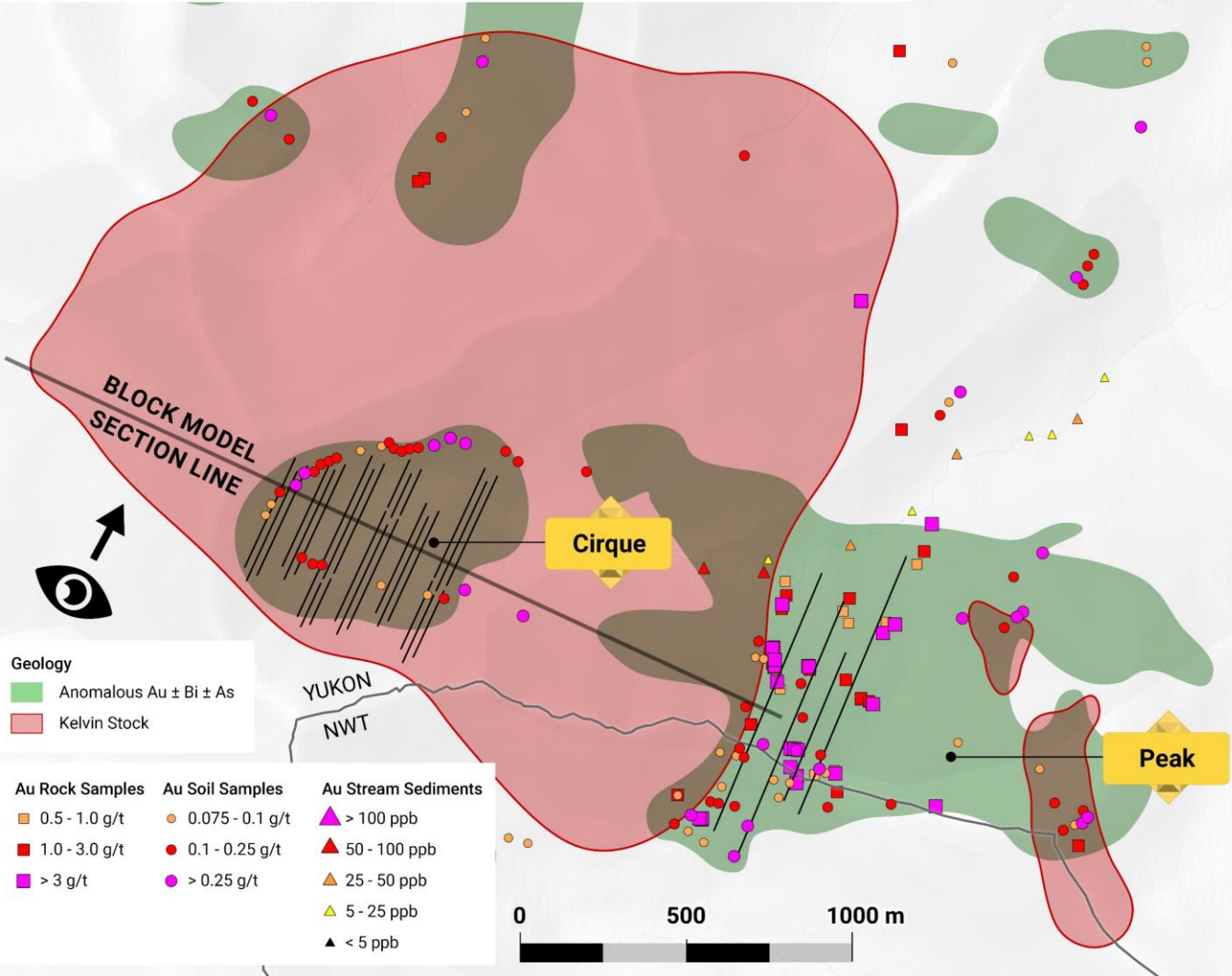
Au Rock Samples	Au Soil Samples	Au Stream Sediments
0.5 - 1.0 g/t	0.075 - 0.1 g/t	> 100 ppb
1.0 - 3.0 g/t	0.1 - 0.25 g/t	50 - 100 ppb
> 3 g/t	> 0.25 g/t	25 - 50 ppb
		5 - 25 ppb
		< 5 ppb



- 14.3 g/t Au
- 6.27 g/t Au
- 7.23 g/t Au
- 5.76 g/t Au
- 17.80 g/t Au
- 11.40 g/t Au
- 6.21 g/t Au
- 9.39 g/t Au
- 8.26 g/t Au
- 12.34 g/t Au
- 7.23 g/t Au

PEAK DISCOVERY

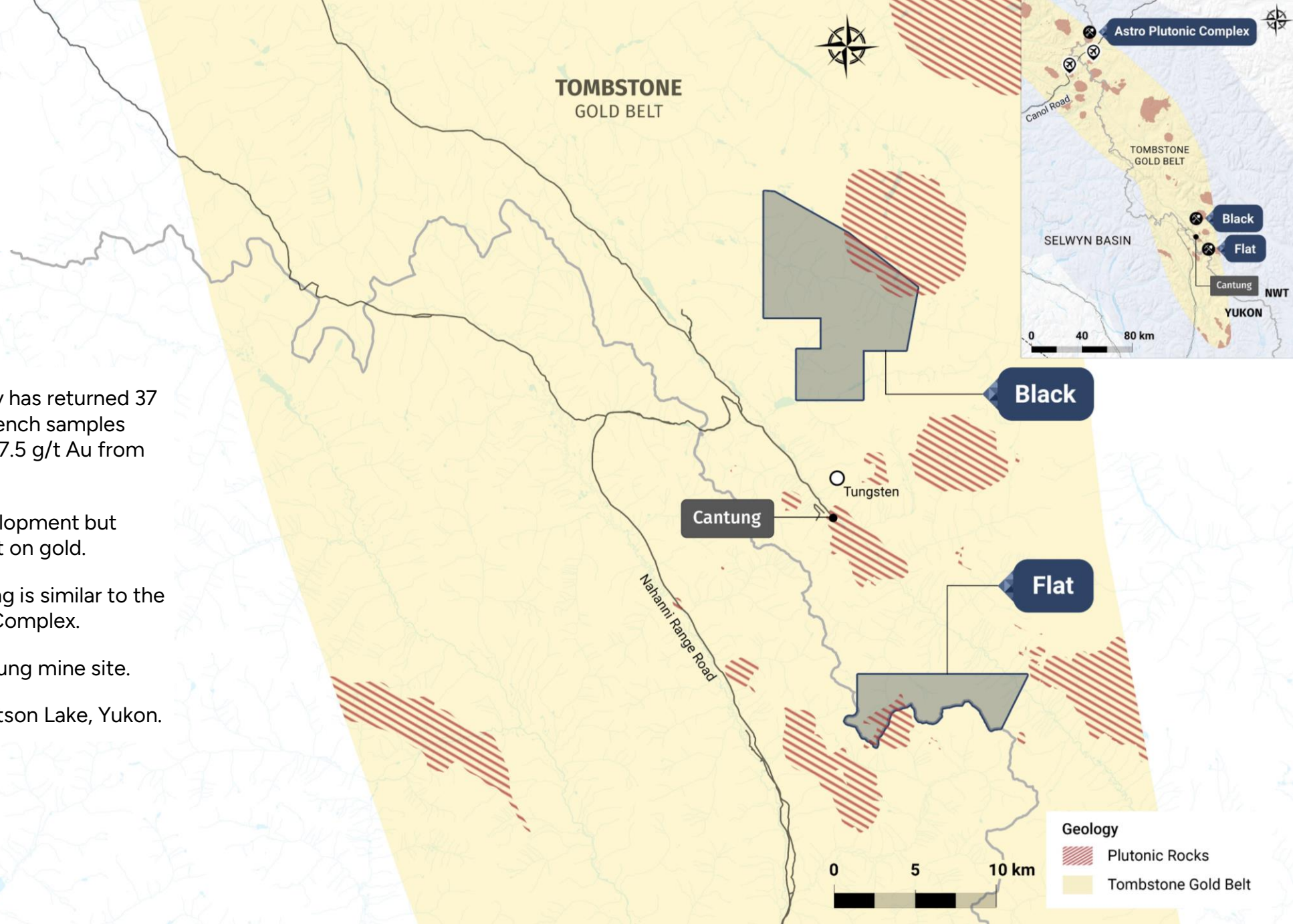
Maiden Drill Program in 2024



Developing Opportunities

Black Property, NWT

- ✓ Historic work at the Black property has returned 37 of 77 (48%) of surface rock and trench samples >0.5 g/t Au, with a peak value of 27.5 g/t Au from quartz-arsenopyrite veins.
- ✓ 40+ years of exploration and development but generally focused on tungsten, not on gold.
- ✓ Geological and geochemical setting is similar to the Peak Target in the Astro Plutonic Complex.
- ✓ Good infrastructure near the Cantung mine site.
- ✓ Road accessible, 307 km from Watson Lake, Yukon.

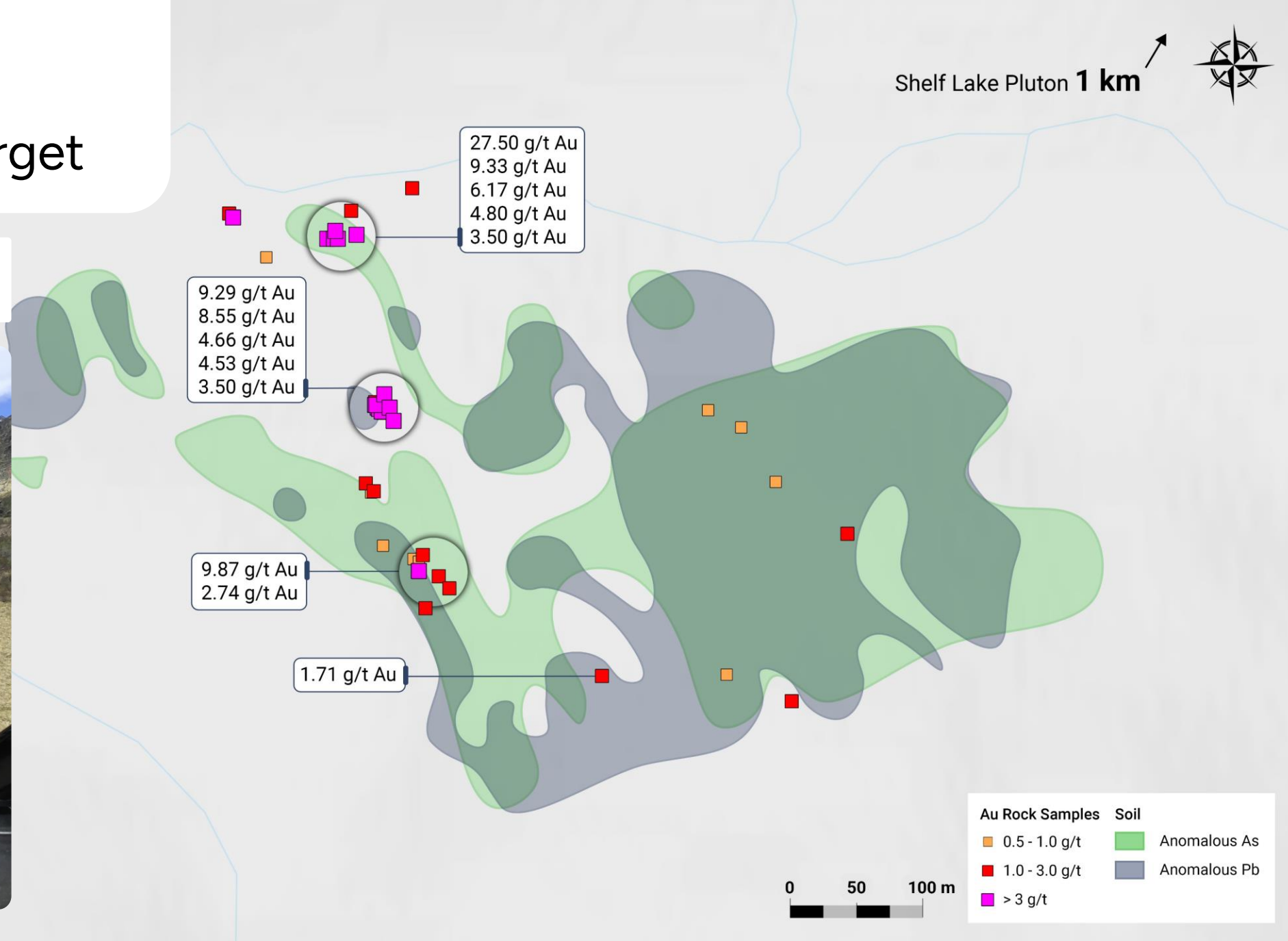


Black Target

A Robust Gold Target

Shelf Lake Pluton **1 km** 

✓ Extensive surface sampling, prospecting and mapping program planned for 2024





Top Tier Leadership with a History Of Discoveries



Simon Ridgway FOUNDER, CEO & DIRECTOR

Mr. Ridgway is a successful prospector and mining financier, gaining his initial experience with grass roots mineral exploration. Starting out as a prospector in the Yukon Territory in the 70's, Simon and the teams under his guidance have discovered gold deposits in Honduras, Guatemala and Nicaragua and silver deposits in Mexico. Simon is a founder of Fortuna Silver Mines and Radius Gold, and the CEO of Volcanic Gold Mines.



Doug Murray PROJECT GEOLOGIST

Doug Murray has been working as an exploration geologist for 6 years with Gold Group on projects in the western US, Mexico, Guatemala, Peru, and northern Canada. Doug has a B.Sc. Honours from the University of Manitoba and is a registered G.I.T. with Engineers and Geoscientists BC.



Scott Casselman VP EXPLORATION

Mr. Casselman was the Head, Minerals Geology with the Yukon Geological Survey, having joined the Survey in 2015.

Previous to his work with the Survey, from 1985 – 2015, Mr. Casselman worked in mineral exploration on projects in Indonesia, Argentina, Turkey, Alaska and Canada, including working in the three northern territories; Nunavut, Northwest Territories and Yukon.



Armand Reypin PROJECT GEOLOGIST

Armand holds B.Sc. and M.Sc. degrees in Geoscience and Mineral Resources from Institut Polytechnique UniLaSalle, France and a M.A.Sc. in Exploration from the University of Quebec in Chicoutimi. He is a registered E.I.T. with Engineers and Geoscientists BC. Armand has been involved in mineral exploration since 2018, exploring in Canada, Peru and Europe.

THE TEAM

Top Tier Leadership with a History Of Discoveries



Adam Buchanan VP CORPORATE DEVELOPMENT

Adam has extensive knowledge of capital markets, resource development and investor relations through more than 10 years' experience in the resource sector. He is responsible for assisting with corporate development, financing, marketing and investor communications. Adam graduated with a B.A. from Simon Fraser University and has completed courses through the Canadian Securities Institute.



Sally Whittall CORPORATE SECRETARY

Sally has over 30 years experience in corporate compliance and securities regulations, and handles Rackla's corporate regulatory work. Before joining the Gold Group, she spent six years working as a corporate securities legal assistant in a major Vancouver law firm. She has completed the Canadian Securities Course and is Corporate Secretary of the companies in the Gold Group. Sally has worked with Simon since 1994.



Kevin Bales CHIEF FINANCIAL OFFICER

Mr. Bales has 20 years of financial reporting experience in mining and information technology industries. He currently serves as CFO for several public junior exploration companies with operations in Canada, the U.S., Latin America, and Europe. Mr. Bales holds a Bachelor of Management degree with a major in accounting.



Amber Ridgway INVESTOR & COMMUNITY RELATIONS

Amber has been working with Gold Group since 2019 as Investor & Community Relations, implementing plans for corporate communications, as well as community engagement for projects in Northern Canada and Guatemala. Amber holds a B.Com. from the University of Victoria and has completed courses on the Toronto Stock Exchange/TSX Venture Exchange and ESG Reporting for Listed Companies.

 THE TEAM

Top Tier Leadership with a History Of Discoveries



Bruce Smith DIRECTOR

Bruce Smith, Member of the Australian Institute of Geoscientists, has B.Sc. and M.Sc. degrees in Geology from Otago University, New Zealand and MEng Water and Environmental Resources, IHE Delft, Netherlands and is 43-101 QP Accredited. Bruce has been exploring for more than 20 years in Africa, Asia-Pacific, Europe, North and South America. He has participated in gold discoveries in Guinea, Guatemala and Nicaragua and led the team that discovered the 200Moz Ag eq Chinchillas deposit in Argentina.



William Katzin DIRECTOR

Mr. Katzin is a graduate of the University of Cape Town, South Africa with a Bachelor of Commerce and Law degree. He is a member of the Institute of Chartered Accountants of British Columbia. He has been a partner in private practice with a Vancouver firm of Chartered Accountants since 1986 and has experience working with resource and exploration companies.



Timothy Beale DIRECTOR

Geologist with over 35 years of experience in mineral exploration and development with major and junior mining corporations, including previous senior exploration roles with Rio Tinto and Anglo American, and including 20 years living and working in the Central Andes of South America. Consultant for Hochschild Mining in early 2000s in Argentina, CEO and director of a junior mining company in 2010s focused on early-stage exploration in Chile and elsewhere, and currently providing consultancy services to the exploration and mining industry.



David Cass DIRECTOR

With a MSc degree in Mineral Exploration and Mining Geology, Mr. Cass has nearly 25 years international exploration and mining industry experience in many countries including the America's, Australia, Turkey, Iran, South Africa and Eastern Europe. He spent 15 years with Anglo American, including 6 years as Exploration Manager of North America, and 4 years managing Anglo's programs in Peru. Mr. Cass is a member of the Association of Professional Engineers and Geoscientists of British Columbia, and a Fellow of the Society of Economic Geologists.

Capital Structure

TSX-V: **RAK**

Basic Shares Outstanding **71.38M**

Warrants **16.87M**

Incentive Stock Options **2.89M**

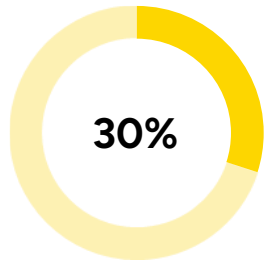
Brokers Compensation Warrants **0.45M**

Fully Diluted **91.60M**

As of March 5th, 2024

Cash **\$1.45M**

As of December 31th, 2023



Insider Ownership



TIMELINE

Upcoming Catalysts

Planning underway for the 2024 exploration program including:

1. HIT

Significant drill program planned to define size and grade of HIT discovery.

2. Peak

Maiden diamond drill program early in the 2024 season to establish the depth potential of high-grade sheeted veins.

3. Cirque Target

Mapping and prospecting in 2024 to determine the source of gold mineralization and advance it to drill stage.

4. Black Target

Extensive surface program planned to bring it to the drill stage.

5. Make new discoveries with “boots-on-ground” prospecting.

6. Ongoing district consolidation & additional strategic claim acquisition.

Highlights of a Tier 1 Team & Assets



Leadership track record of value creation



A Gold Group company—discovery is our business



Highly promising and under-explored land package near a major discovery





RACKLA METALS INC

1.604.801.5432

info@racklametals.com

650-200 Burrard St.
Vancouver, BC, V6C 3L6

